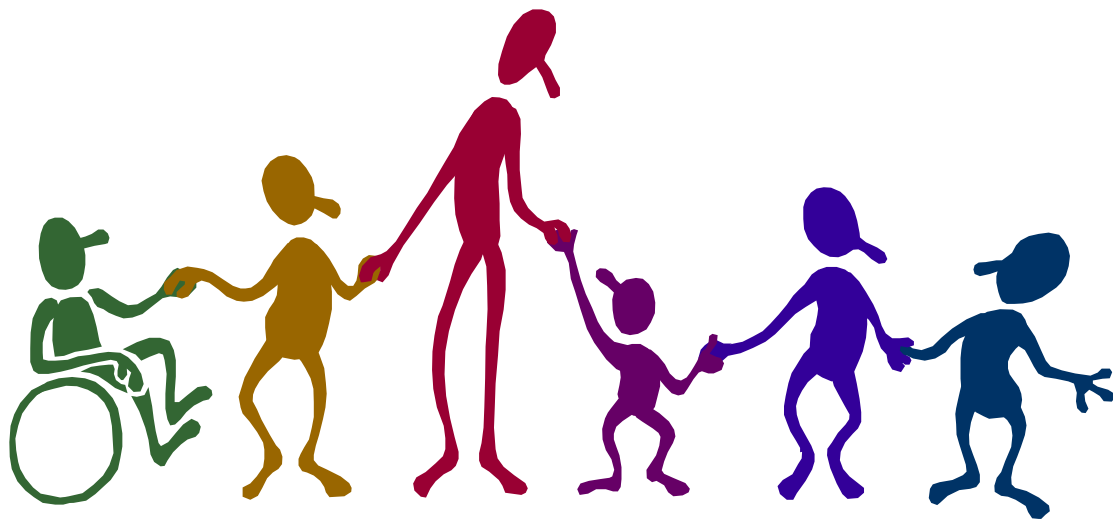


# Wrekin View Primary School and Nursery



Lettings Policy

December 2022

**Learning Together To Achieve Forever**



Review Date: December 2024

## **1. Introduction**

The Governing Body recognises the role of the school within the community and welcomes the use of the School's premises for a variety of community and leisure purposes.

Use of the school premises by the school, or on behalf of the school (e.g. PTA) are not subject to the charging elements of this policy.

A copy of the Booking Conditions will be sent with the application form to the Hirer when the initial enquiry is made.

## **2. Categories of Lettings**

The use of the school premises is divided into the following three categories:

- i. Community and Leisure Learning (e.g. adult education)
- ii. Private (e.g. Wedding Receptions)
- iii. Commercial

## **3. Availability of Premises**

Designated areas within the school are available for hire unless required by the school.

## **4. Charges**

The Governing Body reserves the right to make a charge for the use of the school premises. The charge will vary according to the category of the letting as laid out in Appendix A.

## **5. VAT**

VAT is normally chargeable only on lettings of sports facilities (a concession may be available from H.M. Revenue & Customs if certain conditions are met).

## **6. Application Procedures**

- a) Application forms, available from the school, should be submitted to the School Administration Team at least two weeks before the first day of the proposed letting. In the case of block bookings, four weeks' notice should be given. The person signing the application form will be considered to be the Hirer. The Hirer will be required to return the completed booking form to the school before a booking can be accepted. The booking acceptance will be confirmed by the return of the booking form to the Hirer having been stamped by the office staff.

- b) All applications will be considered on their merits, taking into consideration the suitability of the activity. The Governing Body reserves the right to:
- refuse applications without giving a reason
  - have a representative present at any function
  - terminate any activity not properly conducted
- c) Letting fees are reviewed annually by the Governing Body. When the letting has been confirmed, payment must be made to the school, prior to the use of the premises. In the case of a regular booking, payment will be required at the end of each term.

## **CONDITIONS OF USE**

### **7. Security of the Premises**

Entrance to the school will be via the Main Entrance, which will be opened by the school at an agreed time. For security reasons, the school keys will not be available to the Hirer. It will be the responsibility of the Hirer to ensure that the school premises are secure during the time they are in use, i.e. ensure that the Main Entrance is locked when all members of the group are inside (if no other school activity is taking place).

### **8. Use of Facilities**

- a) The Hirer will be responsible for the proper use of the school facilities (specialist equipment is not generally available e.g. Clevertouch Screens, TV and video equipment, cookers etc., unless special arrangements have been made) and must take all reasonable precautions to ensure that there is no damage to the fabric of the buildings; furniture and fittings, or school equipment. The Hirer will be responsible for making good any damage to the premises and property. Any precautions required to ensure the users' safety when using equipment are the responsibility of the Hirer. This includes, for example, the provision of information and training in the use of the equipment. In all cases, the Hirer must ensure that risks associated with the activity are properly controlled throughout the hire period and that the premises are returned to the control of the school in a clean and satisfactory condition.
- b) All mains powered electrical equipment brought onto the premises must be safe and evidence may be required that it has a valid test and inspection certificate (the certificate should be less than one year old for earthed equipment, or less than 4 years old for double insulated equipment). Lower voltage equipment must also be safe and in good condition.

- c) The Hirer must be advised that they cannot rely on the school's risk assessments for any activities carried out during the letting and must complete their own risk assessments, a copy of which must be held by the school.
- d) Users should acquaint themselves with the Fire and Safety regulations and procedures relating to the area of the premises in use. These will be clearly displayed in each of the designated areas. It is the responsibility of the Hirer to provide first aid equipment and trained personnel. They must also carry out their own fire drills and organise their own fire procedure.
- e) Fire exits must not be blocked or locked, nor should furniture, equipment, or other obstructions be placed in corridors during the hiring.
- f) The Hirer must use only that area of the building hired and must observe any instructions given by the school concerning the area available. Any furniture or equipment moved by the Hirer should be returned to its original position at the end of each session, undamaged and clean.
- g) Toilets are available across the site.
- h) The Hirer is responsible for ensuring that good order is kept on the premises and within the immediate environs of the school, and that the premises are left in a clean and tidy condition.
- i) The Hirer will be responsible for ensuring that the group has adequate insurance appropriate to the activities organised.
- j) The school reserves the right to levy an additional charge to cover:
  - any additional cleaning that may be required after an event
  - the cost of repair of damage to the school fabric or equipment
  - the cost of replacement of any items of school equipment if uneconomical to repair
- k) For security reasons, the Hirer will not have access to the school telephone. Hirers are urged to consider acquiring a mobile telephone for use in an emergency.
- l) Express approval by the Governing Body is required if alcoholic drinks are to be sold or consumed on the premises. **The selling of alcohol requires a licence.** Unconsumed liquor, bottles, cases, glasses and similar articles must be removed from the premises immediately after the function has ended.

- m) Smoking is not permitted anywhere in the school building or grounds, including e-cigarettes.
- n) Animals, other than Guide Dogs, are not permitted anywhere on the school premises. This is purely on grounds of hygiene.
- o) No combustible materials are to be used within the school, except with the express approval of the Governing Body.
- p) **In the event of an incident, fire or near miss**

The school must ensure that Incident Report forms are made available to the Hirer, who in turn, must ensure one is completed correctly and that an investigation is undertaken. A review of the risk assessment for the activity will be required. If the Hirer has produced a risk assessment then the hirer is responsible for undertaking the review and informing the school of any findings that may be relevant. Schools are NOT responsible for undertaking risk assessments for Hirer's activity(ies).

- q) **In the event of fire**

The Hirer will call the Fire Service (if school staff are not present and supporting the activity).

All users will evacuate the building via the nearest fire exit and muster at the designated point. (School playing field)

Users must not re-enter the building until the 'all clear' has been given.

The Fire Service will give this. Fires must be reported using the Incident Report form.

## **9. Licences**

There are a variety of licences that may be required for different types of function. The onus is on the Hirer to ensure which are necessary, and must produce documentary evidence before the letting takes place. The Hirer will indemnify the school and LA against any action brought about by failure to obtain the necessary licence(s). The following categories of letting may require a licence:

- Theatre licence
- Copyright/Royalty licence
- Cinematography licence
- Alcohol
- Music, Singing and Dancing

## **10. Insurance**

The Hirer will be entirely responsible for the proper use of facilities and must take all reasonable precautions to ensure that there is no damage to the fabric of the building, furniture and fittings or any school equipment.

- a) The Hirer shall indemnify the Local Authority when signing the application form against any claim for bodily injury or loss of damage to property (real or personal) whether belonging to the LA or to any other person if the said loss, damage or injury is either caused by the negligence of the user or by the negligence of any other person using the premises hired with the permission of the Hirer.
- b) The effect of a) is that the Hirer will be liable to indemnify the LA for any damage which is caused when the premises are being used for a function for which they are let. However, it is only operative if the damage etc. is caused by the negligence of the user or any other person using the premises with the Hirer's permission.

## **11. Cancellations**

By the Hirer

Cancellations should be made in writing at least 24 hours before the proposed letting, otherwise the Hirer will still be liable for the standard charges. In the event of a cancellation being made at the appropriate time, the school will credit the Hirer for a free booking the following term, if applicable, or refund the fee if no further bookings are required.

By the School

If the school finds it necessary to cancel a booking, as much notice as possible will be given, generally not less than 24 hours and, where possible, alternative accommodation will be offered. If this is not possible, a refund will be made. The LA and the school will accept no liability in respect of commitments incurred by the Hirer due to such cancellations.

## **12. Review**

This policy will be reviewed annually in the Summer Term and any changes to charges will be with effect 1 September.



## Wrekin View Primary School & Nursery

### Notes:

The costs overleaf are based on per booking in any 24 hour period

(Full day 0900-1600, ½ day am 0900-1200, pm 1300-1600, evening 1800-2100)

Additional hours over ½ day but not full day will be charged at 25% cost per hour of session.

Prices may vary dependent upon permanent or repeat bookings.

A £40 out of hours supplement will be levied on all categories of letting to cover the extra cost of caretaking/cleaning incurred by the school outside the standard school hours.

Personal and Commercial lettings will require a deposit equivalent to ½ a day's charge to cover the eventuality that:

- extra cleaning is required in order to return the hired area to a satisfactory state
- or
- chargeable breakage(s) occur

this money will be used to offset the cost of cleaning and/or repair. Any unused money will be returned to the Hirer. Individual contracts exist for a number of organisations under the Extended Schools provisions and Charges & Remissions Policy.

A 10% surcharge will apply to any cancellation.

Appendix 1  
to Wrekin View Primary School  
Lettings Policy

	<i>Community-Use</i>				<i>Personal Use</i>				<i>Commercial Use</i>			
	M-F		S-S		M-F		S-S		M-F		S-S	
	½ Day	Full	½ Day	Full	½ Day	Full	½ Day	Full	½ Day	Full	½ Day	Full
Classroom	15	25	20	35	20	35	25	45	25	45	30	55
ICT Suite	20	35	25	45	25	45	30	55	30	55	35	65
Meeting Room	10	15	15	25	15	25	20	35	20	35	25	45
Hall	20	35	25	45	25	45	30	55	30	55	35	65
CC Training Room	45	90	50	100	50	100	55	110	55	110	60	120
CC Family Room	30	60	35	70	35	70	40	80	40	80	45	90
CC Meeting Room	10	15	15	25	15	25	20	35	20	35	25	45
Playing field	To be agreed at time of booking											



MUGA	To be agreed at time of booking
------	---------------------------------